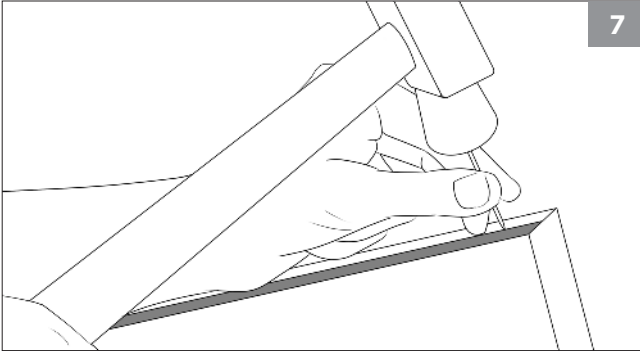


STEP 7

Attach guide glide strips to bottom of door with the brads provided, making sure the wide rippled edge is under the door, fixing at 100mm apart.

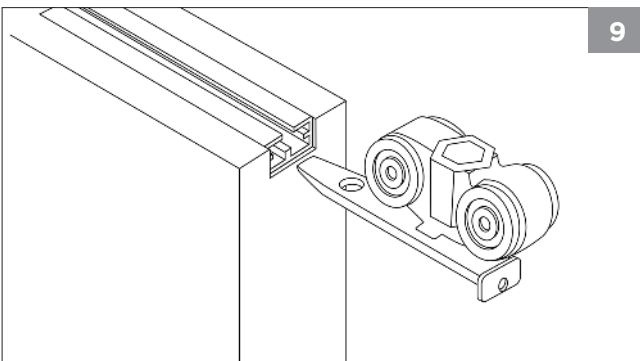


STEP 8

Check that no nails, screws or other obstructions that may damage the door are protruding into the cavity. **IF INSTALLING JOEY SOFT CLOSE PLEASE SEE SOFT CLOSE INSTRUCTIONS AT THIS POINT. IF NOT, CONTINUE TO STEP 9.**

STEP 9

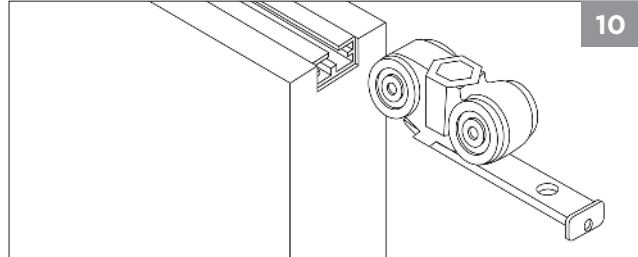
Place rear roller into track. Slide door onto spear of the rear roller as shown in Diagram 9 and fix off. Angle the door into the cavity and gently push door back into cavity.



Position rear roller in the hole closest to the edge of door.

STEP 10

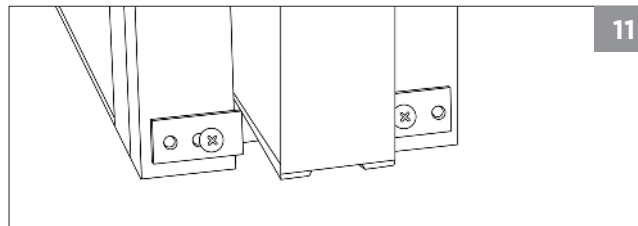
Place the leading roller into track and insert the front spear into door as shown in Diagram 10 and fix off. Adjust bolts to ensure the door closes flush to jamb.



Position leading roller in the hole furthest from edge of door.

STEP 11

Place track insert into the end of the aluminium headboard/track and fix with screw provided. Once door is adjusted to working height, screw guide fingers to the face of split jambs in line with the guide glide strips previously attached to bottom of door in step 7. Adjust guide fingers to ensure door is centred.



JOEY
CAVITY FRAMES

Sliding Door Pockets (Holdings) Pty Ltd
Trading as Joey Cavity Frames
ABN: 59 819 811 200

33 Cameron St Cranbourne 3977
P: (03) 5990 1777 | F: (03) 5998 4595

www.joeycavityframes.com.au

JOEY
CAVITY FRAMES



JOEY ZERO
Installation Instructions

ATTENTION:

Cavity units are not load bearing.

When installing cavity frame it is important that the track is fixed to a structural member. Pack and screw through centre of track using the counter sunk holes provided.

Stud opening size is tight, please allow extra for packing when preparing the opening.

Standard clearance above door 5mm
Standard clearance under door 15mm

Components supplied with cavity unit:

- 1 x Aluminium Head Board/track
- 1 x Pair of Guide Strips
- 1 x Closing Jamb (if required)

Component pack including:

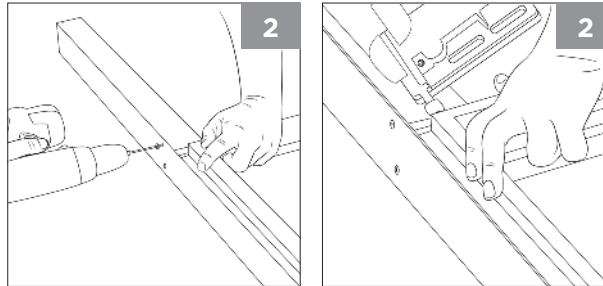
- 2 x Rollers
- 2 x Brackets
- 2 x Guide Fingers
- 1 x Track Insert
- 1 x Spanner
- 8 x 10G, 45mm Wafer Philips Screws (mounting plate screws)
- 2 x 10G, 16mm Screws (guide finger screws)
- 2 x 6G Countersunk Screws (spear fixing screws)
- 3 x 10G, 40mm Countersunk Screws (upward track fixing screws)
- 8 x 8G, 20mm Button Head Screws (Aluminium headboard/track fixing screws)
- 1 x 10G, 40mm Countersunk Metal Cuter Screw (track insert)
- 30 x Brads

STEP 1

Disassemble packed unit and inspect for damage. **Important - check that the track is free from damage, debris and dust.** Pass rollers through the track to ensure that they are running smoothly.

STEP 2

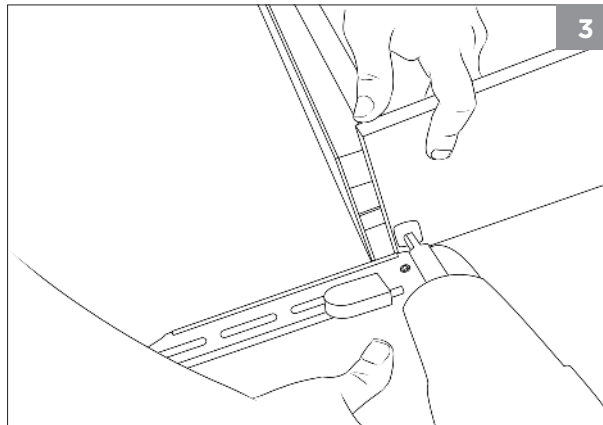
Remove the top spacing ply then fit and screw the head track assembly to the cavity pocket. Do not remove the temporary spacing blocks until the wall sheeting has been completed.



STEP 3

Fix the closing jamb to the head section, fixing through the closing jamb into timber reveal.

Note: no closing jamb provided with plaster reveal units.

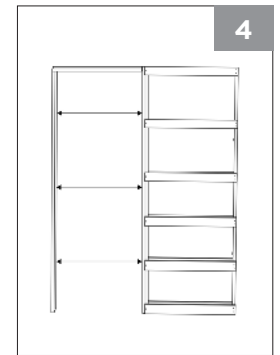


STEP 4

Stand the assembled cavity unit into the prepared frame opening, (pack under cavity unit if required for additional clearance under door). Make sure the split jambs and aluminium headboard/track are square, and that the frame is plumb and level without twist. Then fix through back post of cavity unit into the stud work. A minimum of four fixings are required, fasten the base to the floor.

Level the aluminium head board/track, pack and fix through the track into the stud work. Fix the closing jamb ensuring it is equally spaced from split jambs at the top, middle and bottom.

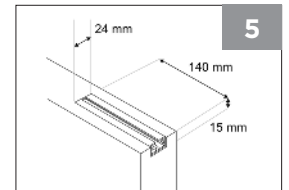
If installing plaster reveal, ensure split jamb is equally spaced to stud work top middle and bottom.



STEP 5

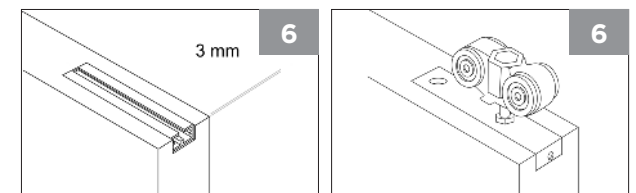
Route top of door to accommodate Joey Zero brackets. See Figure for measurements.

24mm wide, 140mm long, 15mm deep.



STEP 6

Screw brackets **3mm** back from edge of door to allow the spear to become flush with the edge of the door once inserted.



continued overleaf